

Blue Mountain Communication Site

Overview

The candidate site is located 2.30 miles east of Interstate 215, and is situated at the top of Blue Mountain overlooking the City of Grand Terrace. The site is located within San Bernardino County, approximately 1,500 feet north of the Riverside County boundary. Several existing communication facilities are also located atop the mountain. The proposed project will place a tower and an equipment shelter at the site.

Table 1: Blue Mountain Communication Site

Latitude ¹	Longitude ¹	Elev ²	Address	T/R/S ³	APN ⁴	USGS Quadrangle
34°01'20.0"	117°17'46.5"	2,428	4250 Honey Hill Road, Grand Terrace, CA 92313	2S 4W Sec. 4	1178-191-04 (SB)	San Bernardino South
1 – All coordinates utilize NAD83 datum 2 – All elevations in feet above mean sea level 3 – Township/Range/Section (San Bernardino Base Meridian)				4 – All Assessors Parcel Numbers are located in Riverside County, unless noted: OC = Orange County; SD = San Diego County; SB = San Bernardino County		

Surrounding Land Uses

The site sits atop a prominent mountain that is comprised largely of open space. Several communication towers and related facilities are located adjacent to the project site. At the base of the mountain there is substantial urban development extending to the north, west, and east. This urban area includes the communities of Grand Terrace, Colton, Loma Linda, San Bernardino, and Riverside. South from the project site, the mountain extends along a ridge approximately 0.25 mile southwards before dropping precipitously to the valley floor near the Highgrove neighborhood, northeast of the City of Riverside.

Topography and Vegetation

The area is hilly and mountainous and is moderately disturbed by human impacts. The area shows evidence of a recent, high intensity wildland fire that occurred in September of 2006. In addition to the effects of the fire, the area is subject to disturbances associated with off-road vehicle use and maintenance activities associated with the existing communication facilities. The majority of the site is void of vegetation as a result of the fire and human activity. The surrounding area contains vegetation characteristic of coastal sage scrub and chaparral plant communities such as brittlebush, California buckwheat, California sagebrush, and Mexican elderberry. The bulk of the vegetative composition is non-native grasses and weeds, most likely due to frequent fire events and conversion from sage scrub vegetation to non-native grassland.

Land Ownership and Applicable Habitat/Land Management Plan

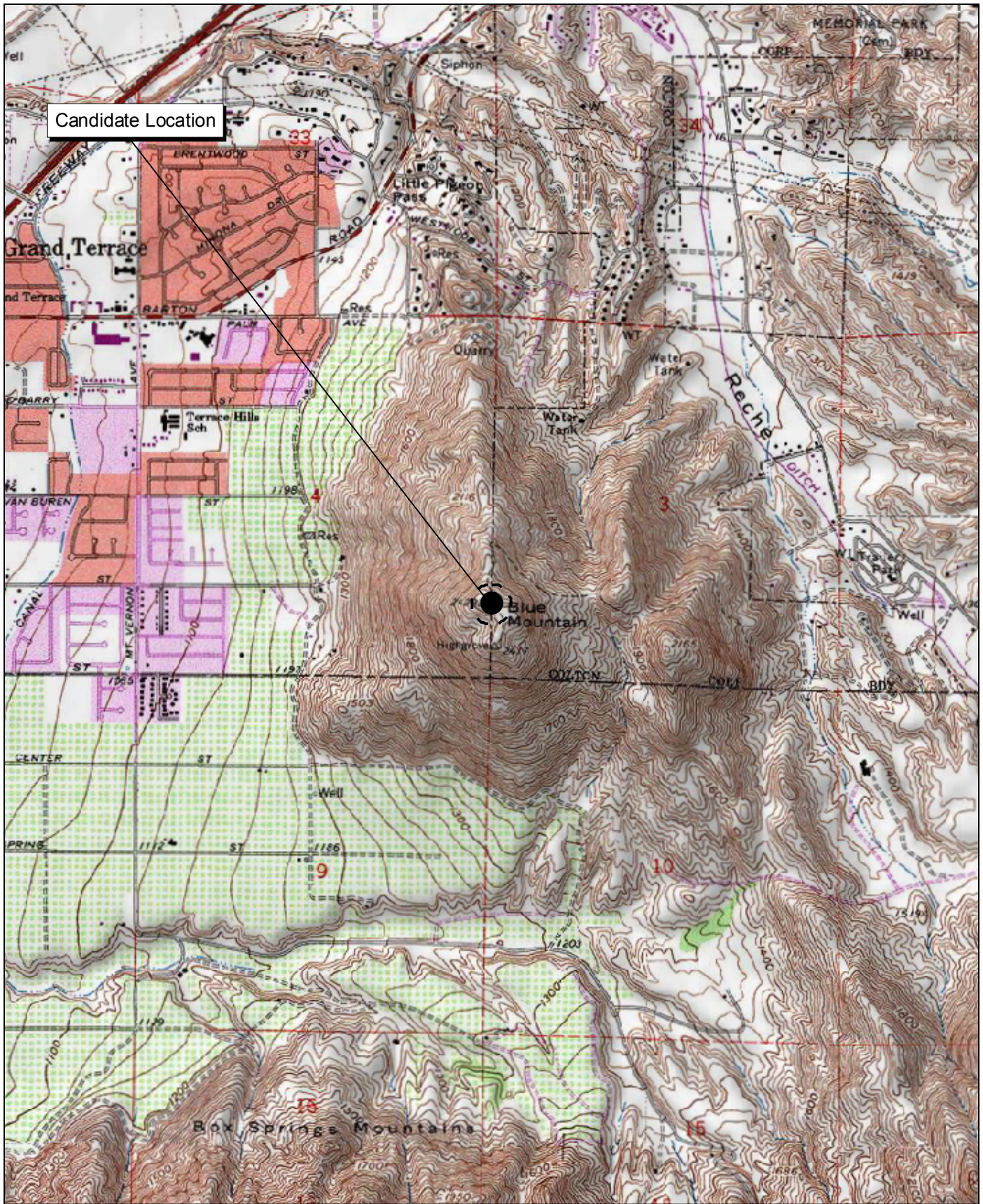
The site is located in San Bernardino County and is privately owned. It is not located within the boundaries of any regional resource management plans, such as a habitat conservation plan; however, it is located within designated critical habitat for coastal California gnatcatcher.

Road Access

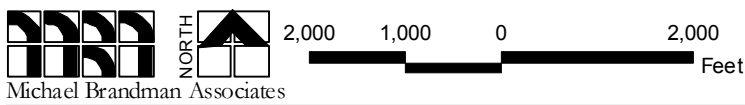
Several dirt roads lead from the base of the mountain to the existing communication facilities atop the mountain.

Commercial Power Access

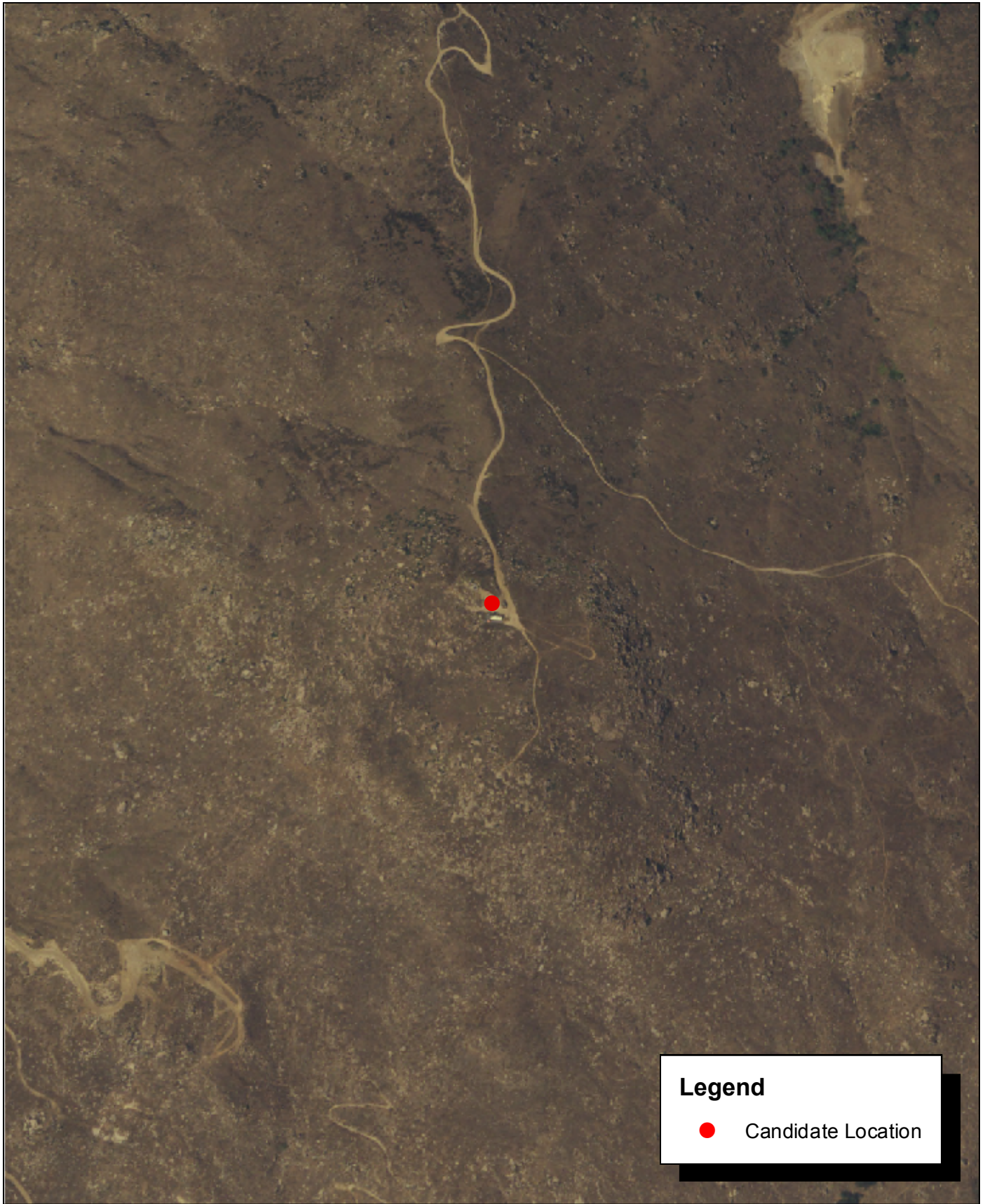
Commercial power is already available at the site and serves the existing communication facilities.



Source: USGS San Bernardino South 7.5' Topographic Map.



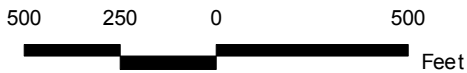
Blue Mountain Communication Site Local Vicinity Topographic Map



Source: Riverside County NAIP, 2005.



27490003 • 02/2008 | blue_mountain_aerial.mxd



Blue Mountain Communication Site Local Vicinity Aerial Map

COUNTY OF RIVERSIDE
PUBLIC SAFETY ENTERPRISE COMMUNICATION PROJECT



Photograph 1: Overview of Blue Mountain candidate location, facing west.



Photograph 2: View toward Blue Mountain candidate location, facing north.



Photograph 3: View toward Blue Mountain candidate location, facing east.



Photograph 4: View toward Blue Mountain candidate location, facing south.

Source: Michael Brandman Associates, 2008.





Photograph 5: View from Blue Mtn. candidate location, facing northeast.



Photograph 6: View from Blue Mtn. candidate location, facing southeast.



Photograph 7: View from Blue Mtn. candidate location, facing west.



Photograph 8: View from Blue Mtn. candidate location, facing southwest.

Source: Michael Brandman Associates, 2008.

